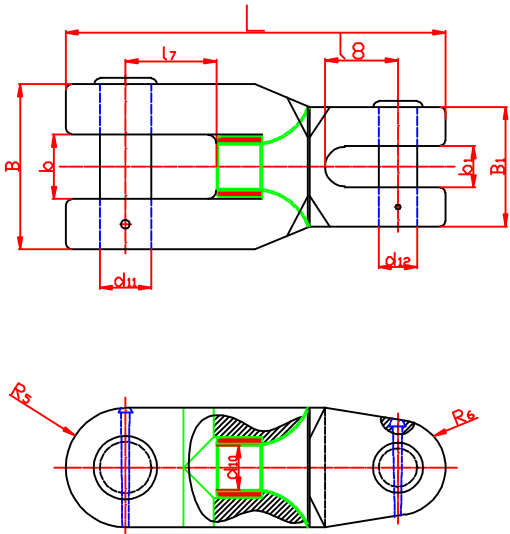


规格	适用锚链 链径d	L	B	B1	b	b1	R5	R6	d _{in}	d _u		d12	l _r	l _s	重量/ kg	GRADE 2		GRADE 3	
										(0.2级)	(0.3级)					PL(kn)	BL(kn)	PL(kn)	BL(kn)
24	22,24	367	138	94	75	34	48	37.5	M36	58	60	31	130	61.5	21	237	332	332	476
28	26,28	432	157	116	82	39	58	47	M42	62	68	36	147	73	42	321	449	449	642
32	30,32	483	180	124	84	45	62	53	M52	68	78	42	161	73	97	417	583	583	833
38	34,36,38	542	213	148	96	53	74	58	M56	76	82	49	175	94	116	581	812	812	1160
42	40,42	600	235	164	102	59	82	66	M64	85	90	55	191	106	125	703	981	981	1400
48	44,46,48	685	269	196	115	67	98	75	M76	90	98	62	220	118	156	908	1270	1270	1810
52	50,52	767	290	202	125	73	109	88	M90	96	107	68	233	125	284	1060	1480	1480	2110
56	54,56	787	314	218	138	78	109	88	M90	102	110	73	243	135	294	1220	1710	1710	2430
62	58,60,62	862	348	252	149	88	126	100	M100	106	118	82	260	152	323	1470	2060	2060	2940
68	64,66,68	968	380	265	154	95	136	106	M110	116	128	88	320	150	458	1750	2450	2450	3500
76	70,73,76	1065	426	304	168	106	152	120	M120	125	136	100	325	184	522	2150	3010	3010	4300
81	78,81	1142	454	328	172	113	164	130	M130	132	145	105	340	183	815	2410	3380	3380	4820
87	84,87	1218	487	352	180	122	176	140	M140	138	152	113	360	214	1007	2750	3850	3850	5500
95	90,92,95	1326	532	380	200	133	190	152	M150	148	160	124	400	231	1300	3230	4510	4510	6440
102	97,100,102	1448	571	412	210	143	206	164	M165	156	168	133	440	253	1610	3660	5120	5120	7320
107	105,107	1538	600	420	220	150	210	176	M175	162	178	140	475	269	1627	3980	5570	5570	7960
117	111,114,117	1638	660	460	225	165	230	188	M190	168	184	154	491	315	2022	4650	6510	6510	9300
122	120,122	1756	705	488	268	175	250	200	M190	190	190	165	510	284	2336	5000	7000	7000	9990
127	124,127	1828	735	508	280	185	260	210	M200	200	200	170	530	296	2636	5350	7490	7490	10710
132	130,132	1900	765	528	290	190	270	220	M205	205	205	178	550	307	2960	5720	8000	8000	11420
137	137	1972	795	548	300	200	285	225	M210	210	210	185	575	319	3309	6080	8510	8510	12160
142	142	2044	825	568	310	205	295	235	M215	215	215	190	595	330	3685	6450	9030	9030	12910
147	147	2116	850	588	295	215	305	240	M220	220	220	198	615	342	4088	6840	9560	9560	13660
152	152	2188	880	608	335	220	315	250	M225	225	225	205	635	354	4520	7220	10100	10100	14430
157	157	2260	910	628	345	225	325	260	M235	235	235	210	660	365	4980	7600	10640	10640	15200
162	162	2332	940	648	355	235	335	270	M240	240	240	218	680	377	5470	7990	11180	11180	15980



- 技术要求**
TECHNICAL REQUIREMENT
1. 锻件表面不应有裂纹、夹层、凹坑等缺陷
The components surface should not have the crack, layer and other flaws that will influence the quality of surface
2. 零件机加工表面和连接面应图防锈油
The components machining surface and the joint face should spread the pickling oil
3. 未注公差: ±2.5%
Other tolerance: ±2.5%
4. 材料: grade2; grade3
Material: grade2; grade3

Lloyd's Register Asia
A member of the Lloyd's Register group

Design Support, Shanghai Office

EXAMINED

This plan has been examined and given the status as shown in the Design Appraisal Document (DAD) number below

DAD Number:

SDS/HULL/113585

Date: 04 Jan 2012

Initials: XYZ

Lloyd's
Register



江苏亚星锚链股份有限公司
JIANGSU ASIAN STAR ANCHOR
CHAIN CO.,LTD

MARK:

ANCHOR SWIVEL SHACKLE TYPE "A"

PROJECT NO.:

DRAWING NO.:

JM01109-22Z01

MATERIAL:

CLASS:

REV: 0

0	2011.09.22	QIADLIANG	YINGQIAOJUAN	LIJIAN
REV	DATE	DESIGNED	CHECKED	APPROVED

This document has been processed electronically
and it is therefore valid without any signature.