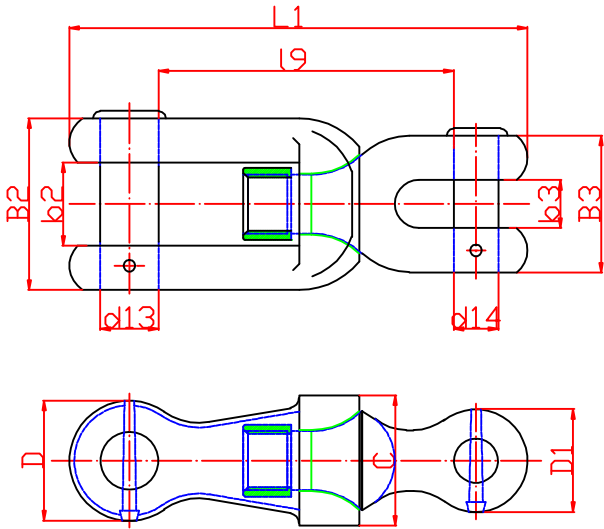



规格	通用销轴 轴径d	L1	L9	B2	B4	B3	B5	D	D1	d13	d14	C	重量/ kg	GRADE 2		GRADE 3	
														PL(kn)	BL(kn)	PL(kn)	BL(kn)
22	22	294 204	189	110	48	88	31	77	66	37	29	84	7.6	200	280	280	401
24	24	321	206	120	53	96	34	84	72	41	31	91	9.9	237	332	332	476
26	26	347	224	130	57	104	36	91	78	44	34	99	12.5	278	389	389	556
28	28	374	241	140	62	112	39	98	84	48	37	106	15.7	321	449	449	642
30	30	401	258	150	66	120	42	105	90	51	39	114	19.4	368	514	514	735
32	32	427	275	160	70	128	45	112	96	54	42	122	23.4	417	583	583	833
34	34	454	292	170	75	136	48	119	102	58	44	129	28	468	655	655	937
36	36	481	310	180	79	144	50	126	108	61	47	137	33.4	523	732	732	1050
38	38	508	327	190	84	152	53	133	114	65	49	144	39.4	581	812	812	1160
40	40	534	344	200	88	160	56	140	120	68	52	152	46	640	896	896	1280
42	42	561	361	210	92	168	59	147	126	71	55	160	53	703	981	981	1400
44	44	588	378	220	97	176	62	154	132	75	57	167	61	769	1080	1080	1540
46	46	615	396	230	101	184	64	161	138	78	60	175	70	837	1170	1170	1680
48	48	641	413	240	106	192	67	168	144	82	62	182	79	908	1270	1270	1810
50	50	668	430	250	110	200	70	175	150	85	65	190	89	981	1370	1370	1960
52	52	695	447	260	114	208	73	182	156	88	68	198	101	1060	1480	1480	2110
54	54	721	464	270	119	216	76	189	162	92	70	205	113	1140	1590	1590	2270
56	56	748	482	280	123	224	78	196	168	95	73	213	126	1220	1710	1710	2430
58	58	775	499	290	128	232	81	203	174	99	75	220	140	1290	1810	1810	2600
60	60	802	516	300	132	240	84	210	180	102	78	228	155	1380	1940	1940	2770
62	62	828	533	310	136	248	87	217	186	105	81	236	171	1470	2060	2060	2940
64	64	855	550	320	141	256	90	224	192	109	83	243	188	1560	2190	2190	3130
66	66	882	568	330	145	264	92	231	198	112	86	251	206	1660	2310	2310	3300
68	68	908	585	340	150	272	95	238	204	116	88	258	225	1750	2450	2450	3500
70	70	935	602	350	154	280	98	245	210	119	91	266	246	1840	2580	2580	3690
73	73	975	628	365	161	292	102	255	219	124	95	277	278	1990	2790	2790	3990
76	76	1015	654	380	167	304	106	266	228	130	99	289	314	2150	3010	3010	4300

规格	通用销轴 轴径d	L1	L9	B2	B4	B3	B5	D	D1	d13	d14	C	重量/ kg	GRADE 2		GRADE 3	
														PL(kn)	BL(kn)	PL(kn)	BL(kn)
78	78	1042	671	390	172	312	109	273	234	133	101	296	340	2260	3160	3160	4500
81	81	1082	697	405	178	324	113	286	243	138	105	308	380	2410	3380	3380	4820
84	84	1122	722	420	185	336	118	294	252	142	109	319	424	2580	3610	3610	5160
87	87	1162	748	435	191	348	122	305	261	148	113	331	472	2750	3850	3850	5500
90	90	1202	774	450	198	360	126	315	270	153	117	342	522	2920	4090	4090	5840
92	92	1229	791	460	202	368	129	322	276	156	120	350	558	3040	4260	4260	6080
95	95	1269	817	475	209	380	133	333	285	162	124	361	614	3230	4510	4510	6440
97	97	1296	834	485	213	388	136	340	291	165	126	369	654	3340	4680	4680	6690
100	100	1336	860	500	220	400	140	350	300	170	130	380	717	3530	4940	4940	7060
102	102	1363	877	510	224	408	143	357	306	173	133	388	761	3660	5120	5120	7320
105	105	1403	903	525	231	420	147	368	315	178	137	399	830	3850	5390	5390	7700
107	107	1430	920	535	235	428	150	375	321	182	139	407	879	3980	5570	5570	7960
111	111	1483	955	555	244	444	155	389	333	189	144	422	980	4250	5940	5940	8480
114	114	1523	980	570	251	456	160	399	342	194	148	433	1062	4440	6230	6230	8890
117	117	1563	1006	585	257	468	164	410	351	199	152	445	1147	4650	6510	6510	9300
120	120	1699	1104	600	264	480	168	408	338	204	156	456	1131	4850	6810	6810	9720
122	122	1727	1122	610	268	488	171	415	344	207	158	464	1199	5000	7000	7000	9990
124	124	1755	1140	620	273	496	174	222	350	210	161	471	1297	5140	7200	7200	10280
127	127	1798	1168	635	279	508	178	435	358	216	165	482	1427	5350	7490	7490	10710
130	130	1840	1196	650	286	520	182	442	366	221	169	494	1560	5570	7800	7800	11140
132	132	1869	1214	660	290	528	185	448	372	224	172	502	1662	5720	8000	8000	11420
137	137	1940	1260	685	301	548	192	466	386	233	178	520	1883	6080	8510	8510	12160
142	142	2010	1306	710	312	568	199	482	400	241	185	540	2116	6450	9030	9030	12910
147	147	2080	1352	735	323	588	206	500	415	250	191	558	2537	6840	9560	9560	13660
152	152	2152	1398	760	334	608	213	516	428	258	198	578	2611	7220	10100	10100	14430
157	157	2223	1444	785	345	628	220	534	442	267	204	596	2897	7600	10640	10640	15200
162	162	2294	1490	810	356	648	227	550	456	275	210	616	3197	7990	11180	11180	15980



技术要求
TECHNICAL REQUIREMENT
1. 铸件表面不应有裂纹、夹渣、凹坑等缺陷
The components surface should not have the crack, layer and other flaws that will influence the quality of surface
2. 零件机加工表面和连接面应涂防锈油
The components machining surface and the joint face should spread the pickling oil
3. 未注公差: ±2.5%
Other tolerance: ±2.5%
4. 材料: grade2; grade3
Material: grade2; grade3

 江苏亚星锚链股份有限公司 JIANGSU ASIAN STAR ANCHOR CHAIN CO.,LTD				
MARK:				
0	2011.09.22	QIADLIANG	YINGQIAOJUAN	LIJIAN
REV	DATE	DESIGNED	CHECKED	APPROVED

Lloyd's Register Asia
A member of the Lloyd's Register group

Design Support, Shanghai Office

EXAMINED

This plan has been examined and given the status as shown in the Design Appraisal Document (DAD) number below

DAD Number:
SDS/HULL/113585

Date: 04 Jan 2012 Initials: XYZ

ANCHOR SWIVEL SHACKLE TYPE "B"

This document has been processed electronically and it is therefore valid without any signature.

PROJECT NO.:

DRAWING NO.:
JM01109-22Z02

MATERIAL:

CLASS:

REV: 0